

A LEADING FIRE FIGHTING PUMP COMPANY

YAMANASHI®

www.yamanashi.com.my

info@yamanashi.com.my

FIRE FIGHTING PUMP SETS CONFORM TO EN 12845 ESC Series

YAMANASHI specialises in the production of world class fire protection equipment. From enquiry stage, right through design, manufacturing, installation and after sales service, YAMANASHI strives to provide a quality, reliable fire protection system at the most competitive price.

EN 12845 provides a pan-European standard for the design, installation and maintenance of automatic sprinkler systems and encompasses the basic requirements set forth by local rules into one European Standard.



The new YAMANASHI End-Suction product line is the latest addition to the YAMANASHI range. Cost effective and efficient, these will be used in fire pump packages specifically designed and built to comply with the regulations of European standard EN 12845, along with other local rules.



Member



Fire Protection Association

FEATURES

In accordance with the different planning needs, the fire fighting systems can be composed by pumps connected to electric motors or to diesel engines. The jockey pump works only to keep the constant pressure in the system in case of water leaks. The delivery and the head of the jockey pump can't be considered in the total calculation of the systems supply.

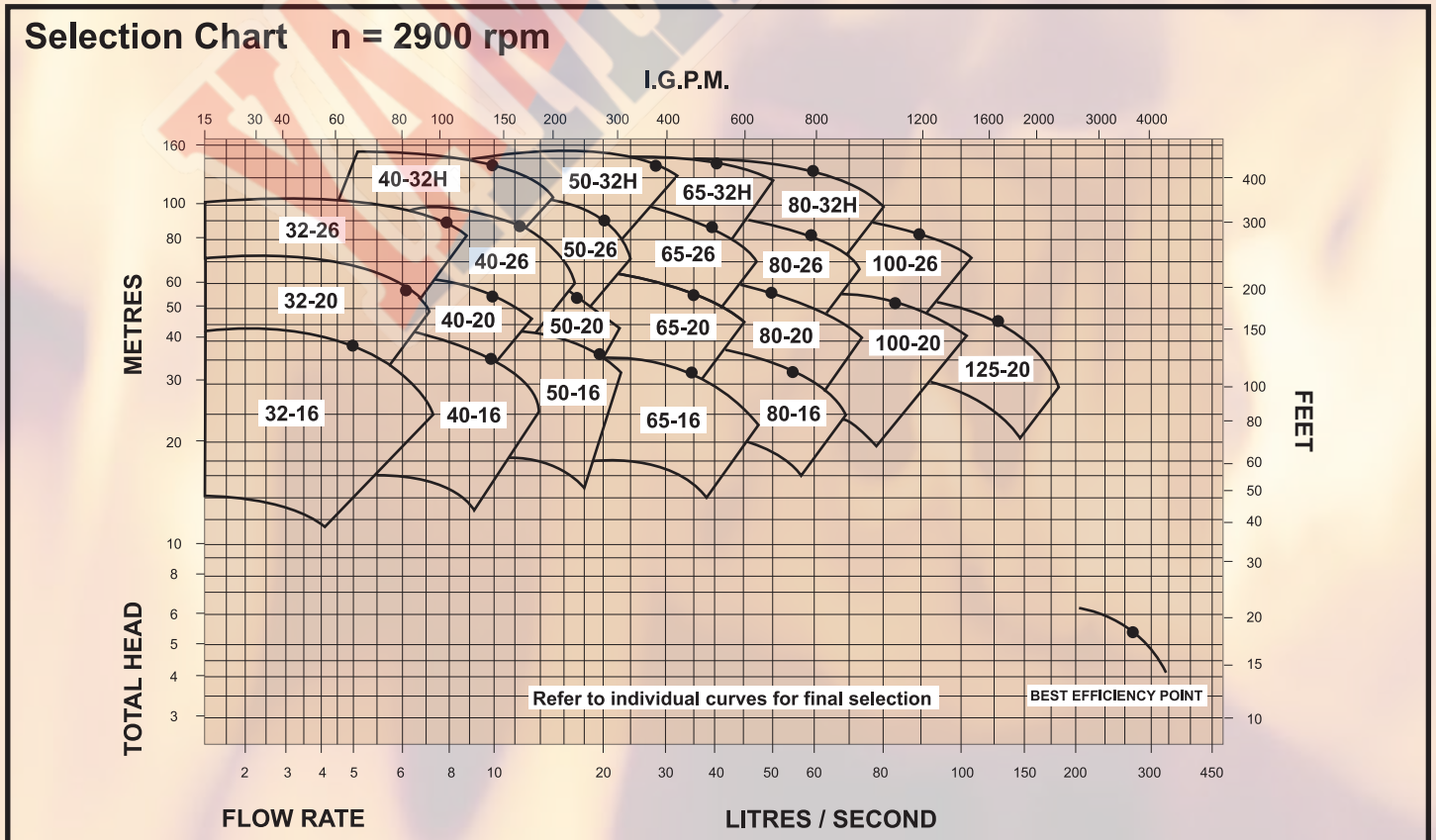
Yamanashi establishes design and development for fire fighting pumps. An automatic sprinkler system is designed to detect the presence of fire and extinguish it in the initial stages, or to keep flames under control until they can be extinguished fully using ancillary means. With Yamanashi operates in the fire fighting field as supplier of water fire fighting pumps fully in compliance with the European Standards (EN 12845 & EN 12259-12) as well as Malaysian Standards (MS 1910).

Yamanashi technical skill allows to easily operate in building and industrial fields and to meet the hardest specifications required by refineries, petrochemical industries and off-shore, platform and on-shore plants.

The duty pump is controlled by an electric panel and the pump is automatically started by its pressure switch. The diesel engine keeps on working till the manual stop. The jockey pump stops automatically when pressure is restored. According to the power output of the engine the electrical system can be either 12V or 24V DC. The diesel engine consists of starter motor, fuel system, lubricating system, exhaust system etc. All are mounted on a strong common base frame of mild steel and painted red.

APPLICATIONS

Water supply to fixed and automatic fire fighting systems such as automatic sprinkler systems in conformity with EN 12845, BS 5306-2 rules. Pressurized hydrant and wet riser systems also applied.

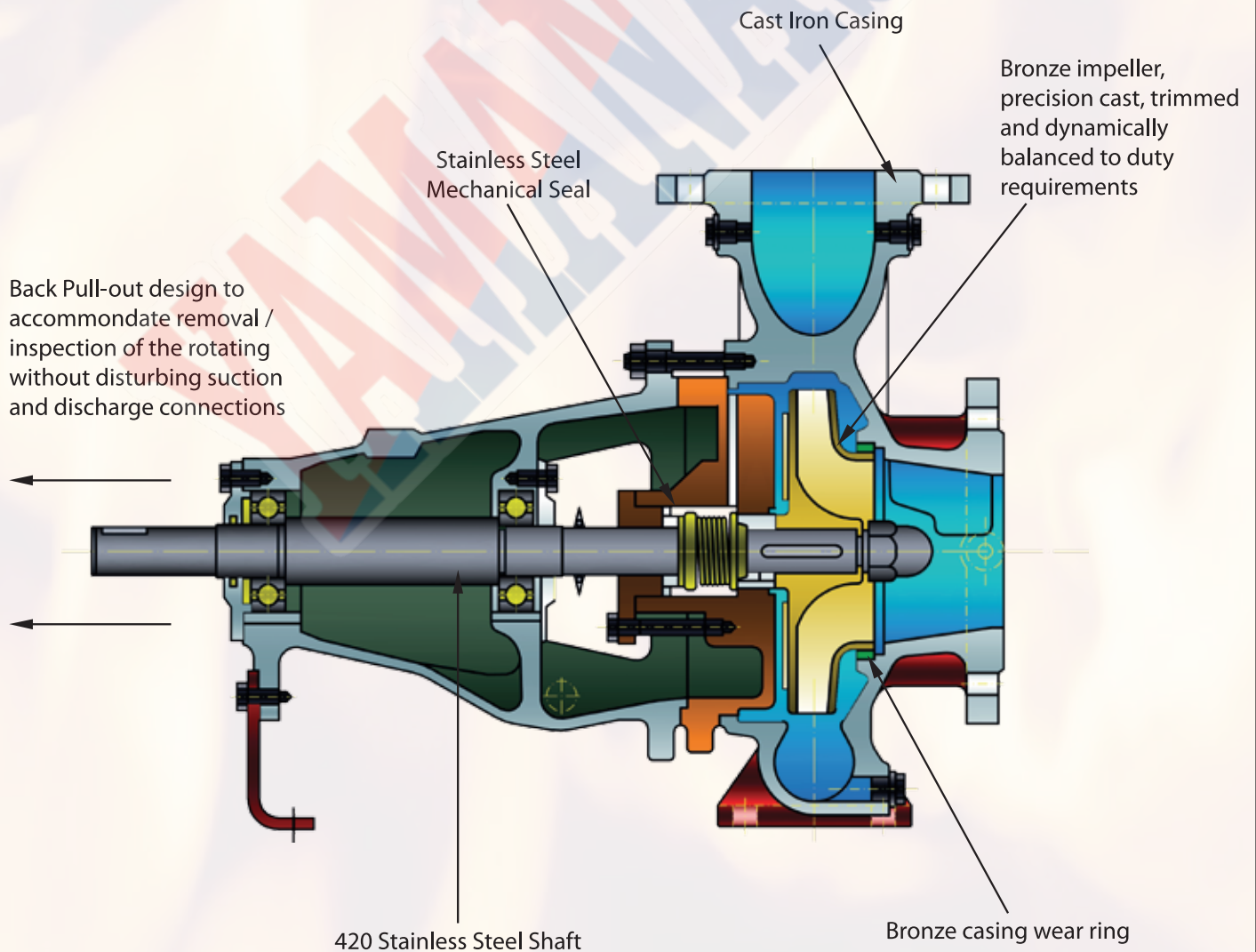


ENGINEERED TO ENSURE LONG LASTING

EN 12845 End Suction Pumps

Features of the new End Suction pump line include

- Bronze Impeller & Shaft Sleeve
- Back Pull-out design in accordance with EN 12845 section 10.1
- 420 Stainless Steel Shaft
- Positively Lubricated Stainless Steel Mechanical Seal
- Bearing housing registered directly to the casing
- Removable support foot fitted at the drive for greater rigidity
- Domed type locking nut seals the stainless steel shaft at the impeller
- Conform to EN 12259-12 (Fire Pumps)



ONE PUMP PACKAGE TO MEET ALL YOUR NEEDS

EN 12845 Section 10.8: Electric Driven Pumpsets

Electric Driven Fire pump packages will be baseplate mounted with an IEC 60034-30 IE2 Y2E series high efficiency motor. In accordance with EN 12845 section 10.1, the coupling between the driver and the pump will be a spacer type coupling, to ensure that removal of either pump or motor from the base plate is possible without disturbing the other.



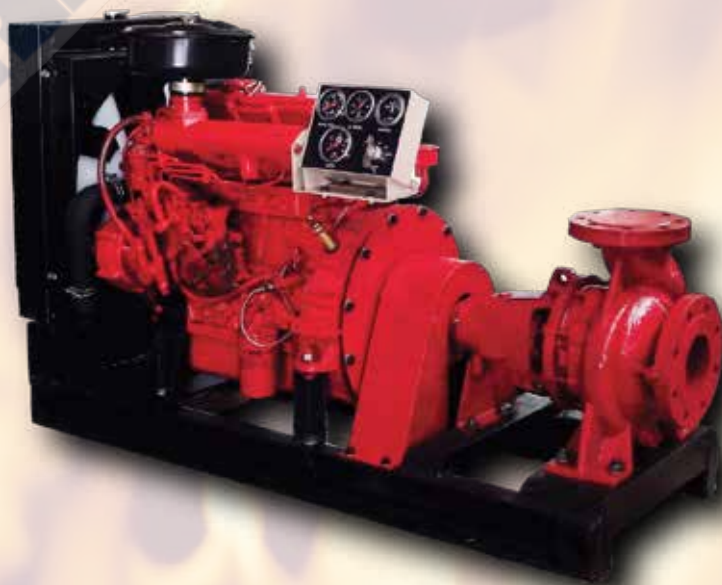
EN 12845 Section 10.9: Diesel Driven Pumpsets

Diesel Driven Fire pump packages will be mounted on one base plate comprising of the pump, drive shaft and guard, diesel engine, controller, batteries, fuel tank and spill basin.

Diesel engines used in the Yamanashi Fire Pump package will be in compliance with EN 12845, Section 10.9.2. inclusive of: Manual and automatic starting systems, Magnetic pickup, Manual shut-down on fuel pump, Combined oil pressure switch / sender, Combined water temperature switch / sender

Fuel tanks will be sized for 6 hours operation, according to the selected engine fuel consumption data.

All diesel engine driven pump sets will be string tested before delivery.



Sole Agent:

Yamanashi Corporation Sdn. Bhd.

PT.145365, Jalan Chepor 11/5,
Kawasan Perindustrian Pusat Seramik,
31200 Chepor, Ipoh,
Perak Darul Ridzuan, Malaysia.

Telephone: +605-2018768, 69
FAX: +605-2018770
E-mail: info@yamanashi.com.my
Website: <http://www.yamanashi.com.my>

Distributed by:

